

# L A N D T E C H

L A N D S C A P I N G   F O R   T H E   F U T U R E

# 4 STAGE PROCESS

Your landscape management program is broken down into 4 crucial stages. It is key to our success to work together through these steps as a team.

## 1. IMPROVE

maintenance techniques by utilizing knowledge and experience to maximize aesthetics while minimizing your resources

## 2. REDUCE

spending by analyzing and modifying the current landscape budget to best accommodate your individual goals and priorities

## 3. PLAN

and invest for your future by completing improvement projects that will increase your property value

## 4. HELP

you sustain the process with discipline by repeating steps 1-3 with the goal to always continue to learn, improve and evolve.

# 4 STAGE PROCESS

## STAGE 1

### Improve Maintenance Techniques

- Irrigation
  - Sprinkler Coverage
  - Clock Programming
  - Minor adjustments
  - Seasonal Adjustments
  - Precipitation Rates
- Grass
  - Weed control programs
  - Seasonal nutrient applications
  - Aerate and dethatch
  - Mowing
- Plants
  - Treat each species differently
  - Seasonal cutbacks
  - Natural pruning to promote flowers
- Trees
  - Complete Trimming Plan
  - Correct tree stakes
- Rock
  - Blow, rake and evenly disperse existing material

## STAGE 2

### Reduce Spending

- Irrigation
  - Complete irrigation inspection
- Grass
  - Turf conversions causing damage or waste
- Plants
  - Selective removal
- Trees
  - Remove dangerous & unsightly trees
- Rock
  - Erosion and drainage projects
  - Trip hazards

## STAGE 3

### Plan and Invest

- Irrigation
  - Phased system replacement
  - Upgrade controllers
  - Re-engineering and upgrading
- Grass
  - Turf conversions for aesthetics
  - Turf additions
- Plants
  - Replacements
  - Installs
- Trees
  - Selective removal and replacement plans
- Rock
  - Replenishment plans



# NATURAL AREAS - STAGE 1

**IMPROVE** maintenance techniques by utilizing knowledge and experience to maximize aesthetics while minimizing your resources



**Maintain natural areas** to keep weeds and natural grasses/plants from encroaching into walkways and streets.





# NATURAL AREAS - STAGE 1

**IMPROVE** maintenance techniques by utilizing knowledge and experience to maximize aesthetics while minimizing your resources



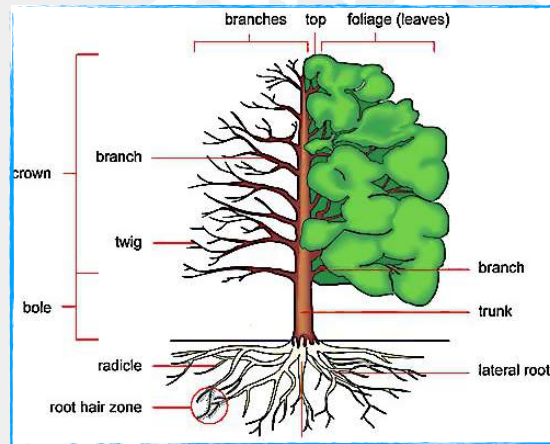
**Maintain natural areas** to keep weeds and natural grasses/plants from encroaching into walkways and streets.





# T R E E M A N A G E M E N T

We create a personalized tree management program designed for each property's individual needs. Outside of the included tree trimming plan, we proactively inspect your trees and propose any additional services necessary (removals, replacements, installs, etc.) to keep your trees healthy and your property looking it's best!



## A L L I N C L U S I V E P R O G R A M

We focus on the safety and longevity of your assets through proper pruning, nutrition, and preventative treatments.

- Remove diseased, dead, and damaged branches
- Perform thinning, reduce size, weight, liability
- Improve stability, structure and sustainability
- Aesthetic appeal, ground clearance, visibility
- Sustain natural shape and landscape design
- Allow light to filter through to interior branches
- Avoid breakage/unforeseen emergency corrections
- Competing limbs, crossed or rubbing branches

T R E E I N V E N T O R Y : Sample Property

TREE ID	SPECIES	SIZE	TRIMMING DETAIL	FERTILIZATION
1001	Palo Brea	L	Seasonal trim, keep elevated above parking and walkways	Bi-annually
1002	Palo Brea	M	Seasonal trim, keep elevated above parking and walkways	Bi-annually
1003	Palo Brea	S	Seasonal trim, train structure	Bi-annually
1004	Palo Brea	S	Seasonal trim, train structure	Bi-annually
1005	Palo Brea	M	Seasonal Trim, keep clear for traffic	Bi-annually
1006	Siso	L	Seasonal trim, maintain for building signage	Bi-annually
1007	Siso	L	Seasonal trim, maintain for building signage	Bi-annually
1008	Siso	L	Seasonal trim, maintain for building signage	Bi-annually
1009	Siso	L	Seasonal trim, maintain for building signage	Bi-annually
1010	Mesquite	M	Seasonal trim	Bi-annually
1011	Mesquite	L	Seasonal trim	Bi-annually
1012	Mesquite	L	Seasonal trim	Bi-annually
1013	Mesquite	L	Seasonal trim	Bi-annually
1014	Pine	M	Light trimming, watch for stress	Annually
1015	Pine	M	Light trimming, watch for stress	Annually
1016	Pine	M	Light trimming, watch for stress	Annually

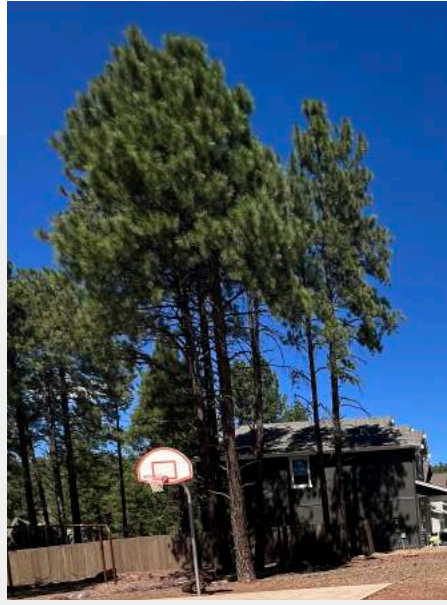
L A N D T E C H

480-249-3555

info@LandTechNetwork.com

# T R E E S - S T A G E 1

IMPROVE maintenance techniques by utilizing knowledge and experience to maximize aesthetics while minimizing your resources



## All-inclusive tree trimming:

Remove diseased, dead, and damaged branches		Thinning, reduce size, weight, liability
Improve stability, structure and sustainability		Aesthetic appeal, ground clearance, visibility



# T R E E S - S T A G E 2

**REDUCE** spending by analyzing & modifying the current landscape budget to best accommodate your individual goals & priorities



Build plan to **remove** dangerous and unsightly trees to improve safety, clearance, visibility, and aesthetic appeal. Remove crowded, dwarfed, or competing trees to ensure there is proper space to reach a healthy, mature size.



# ROCK RECOMMENDATIONS

Rock and mulch is an asset that slowly diminishes over time. If not planned for, this can be an unexpected large expense. Plan to phase rock replenishment on a scheduled basis, before it becomes an urgent issue.





# ROCK RECOMMENDATIONS

Rock and mulch is an asset that slowly diminishes over time. If not planned for, this can be an unexpected large expense. Plan to phase rock replenishment on a scheduled basis, before it becomes an urgent issue.

Maintain rock/mulch areas to a fresh and neat appearance with proper blowing and raking techniques, and chemical weed control.

Build plans to address erosion and drainage issues, and potential trip hazards of granite and curbing throughout the property.  
Build plans to replenish areas where the rock/mulch is sparse to improve uniformity and aesthetics and control drainage.





# ROCK RECOMMENDATIONS

Rock and mulch is an asset that slowly diminishes over time. If not planned for, this can be an unexpected large expense. Plan to phase rock replenishment on a scheduled basis, before it becomes an urgent issue.

Maintain rock/mulch areas to a fresh and neat appearance with proper blowing and raking techniques, and chemical weed control.

Build plans to address erosion and drainage issues, and potential trip hazards of granite and curbing throughout the property.  
Build plans to replenish areas where the rock/mulch is sparse to improve uniformity and aesthetics and control drainage.





# ROCK RECOMMENDATIONS

Rock and mulch is an asset that slowly diminishes over time. If not planned for, this can be an unexpected large expense. Plan to phase rock replenishment on a scheduled basis, before it becomes an urgent issue.

Maintain rock/mulch areas to a fresh and neat appearance with proper blowing and raking techniques, and chemical weed control.

Build plans to address erosion and drainage issues, and potential trip hazards of granite and curbing throughout the property.  
Build plans to replenish areas where the rock/mulch is sparse to improve uniformity and aesthetics and control drainage.





# ROCK RECOMMENDATIONS

Rock and mulch is an asset that slowly diminishes over time. If not planned for, this can be an unexpected large expense. Plan to phase rock replenishment on a scheduled basis, before it becomes an urgent issue.

Maintain rock/mulch areas to a fresh and neat appearance with proper blowing and raking techniques, and chemical weed control.

Build plans to address erosion and drainage issues, and potential trip hazards of granite and curbing throughout the property.  
Build plans to replenish areas where the rock/mulch is sparse to improve uniformity and aesthetics and control drainage.





# ROCK RECOMMENDATIONS

Rock and mulch is an asset that slowly diminishes over time. If not planned for, this can be an unexpected large expense. Plan to phase rock replenishment on a scheduled basis, before it becomes an urgent issue.

Maintain rock/mulch areas to a fresh and neat appearance with proper blowing and raking techniques, and chemical weed control.

Build plans to address erosion and drainage issues, and potential trip hazards of granite and curbing throughout the property.  
Build plans to replenish areas where the rock/mulch is sparse to improve uniformity and aesthetics and control drainage.





# AMENITIES

IMPROVE maintenance techniques by utilizing knowledge and experience to maximize aesthetics while minimizing your resources



Maintain **common area** amenities including trash cans, dog stations, and tot lots. Dispose of refuse and refill receptacles as needed. Ensure grounds and landscape around playground areas are clean and raked/blown.



# AMENITIES

**IMPROVE** maintenance techniques by utilizing knowledge and experience to maximize aesthetics while minimizing your resources



Maintain **common area** amenities including trash cans, dog stations, and tot lots. Dispose of refuse and refill receptacles as needed. Ensure grounds and landscape around playground areas are clean and raked/blown.







T H A N K Y O U