

# LANDTECH

LANDSCAPING FOR THE FUTURE

# LANDSCAPE MANAGEMENT

## ASSESSMENT

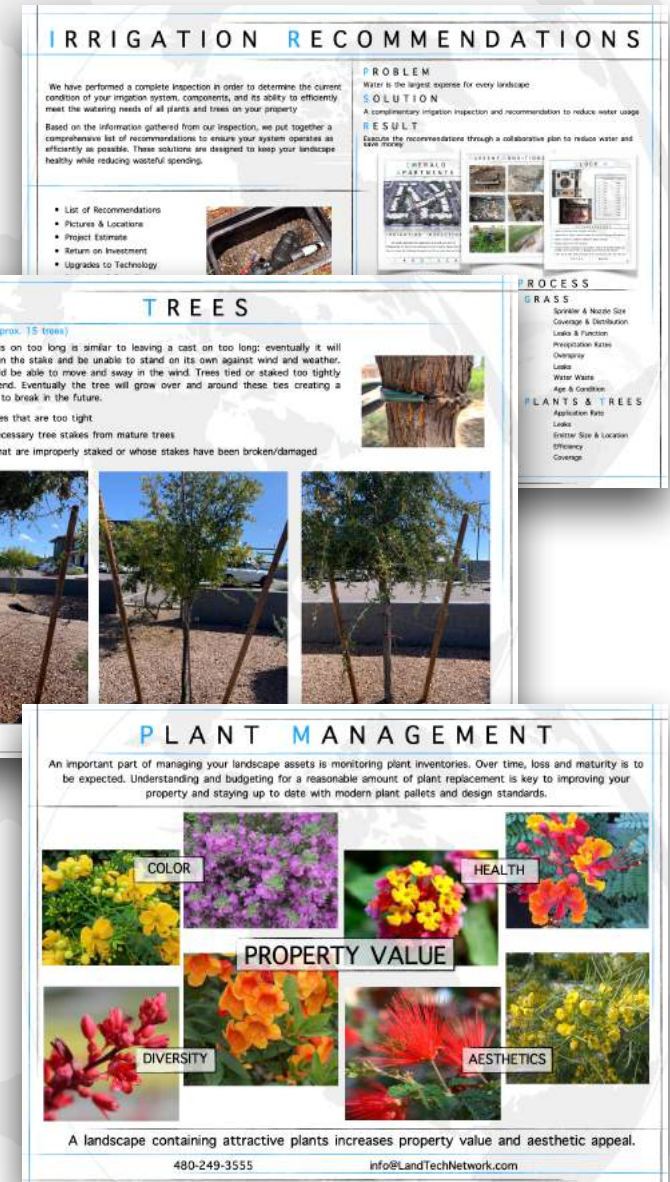
We have a certified team of professional arborists, horticulturists, and landscape professionals with decades of experience. Our team will perform a landscape assessment, which is a complete review of all aspects of your current landscaping.

## ACTION PLAN

We will generate a detailed report and recommendations of the findings. The initial assessment is used to develop a proper improvement plan which is crucial to maintain and increase the value of your property.

## SUSTAINABILITY

In addition, throughout the many years of our working relationship we will help mitigate risk by making on-going recommendations for proactive methods of protecting, preparing, and improving all aspects of your landscape.



# 4 STAGE PROCESS

Your landscape management program is broken down into 4 crucial stages. It is key to our success to work together through these steps as a team.

## 1. IMPROVE

maintenance techniques by utilizing knowledge and experience to maximize aesthetics while minimizing your resources

## 2. REDUCE

spending by analyzing and modifying the current landscape budget to best accommodate your individual goals and priorities

## 3. PLAN

and invest for your future by completing improvement projects that will increase your property value

## 4. HELP

you sustain the process with discipline by repeating steps 1-3 with the goal to always continue to learn, improve and evolve.

# 4 STAGE PROCESS

## STAGE 1

### Improve Maintenance Techniques

- Irrigation
  - Sprinkler Coverage
  - Clock Programming
  - Minor adjustments
  - Seasonal Adjustments
  - Precipitation Rates
- Grass
  - Weed control programs
  - Seasonal nutrient applications
  - Aerate and dethatch
  - Mowing
- Plants
  - Treat each species differently
  - Seasonal cutbacks
  - Natural pruning to promote flowers
- Trees
  - Complete Trimming Plan
  - Correct tree stakes
- Rock
  - Blow, rake and evenly disperse existing material

## STAGE 2

### Reduce Spending

- Irrigation
  - Complete irrigation inspection
- Grass
  - Turf conversions causing damage or waste
- Plants
  - Selective removal
- Trees
  - Remove dangerous & unsightly trees
- Rock
  - Erosion and drainage projects
  - Trip hazards

## STAGE 3

### Plan and Invest

- Irrigation
  - Phased system replacement
  - Upgrade controllers
  - Re-engineering and upgrading
- Grass
  - Turf conversions for aesthetics
  - Turf additions
- Plants
  - Replacements
  - Installs
- Trees
  - Selective removal and replacement plans
- Rock
  - Replenishment plans

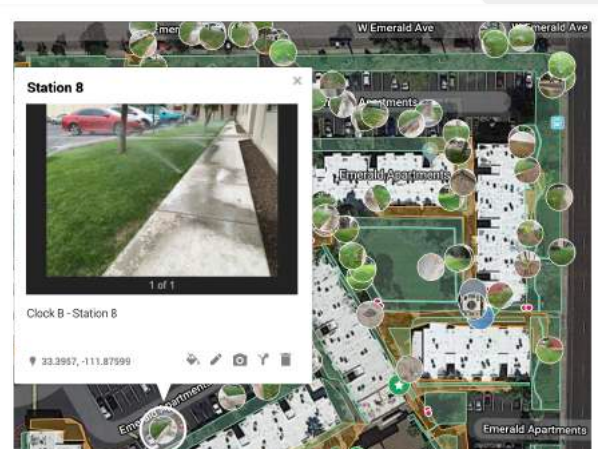


# IRRIGATION MANAGEMENT

When we start as your landscape manager, we will perform an in-depth irrigation inspection. This will help all of us understand the current condition of your irrigation system, components, and its ability to efficiently meet the watering needs of all plants and trees on your property

Based on the information gathered from our inspection, we put together a comprehensive list of recommendations to ensure your system operates as efficiently as possible. These solutions are designed to keep your landscape healthy while reducing wasteful spending.

- List of Recommendations
- Pictures & Locations
- Project Estimate
- Return on Investment
- Upgrades to Technology
- Redesigns & Retrofits
- Future Management Tools



480-249-3555

## PROBLEM

Water is the largest expense for every landscape

## SOLUTION

A complimentary irrigation inspection and recommendation to reduce water usage

## RESULT

Execute the recommendations through a collaborative plan to reduce water and save money



## INSPECTION PROCESS

### MAINLINES

Meters  
Backflows

### CLOCKS

Age & Condition  
Display & Operation  
Electrical Outputs  
Programming  
Manual and Automatic Operation

### VALVES

Boxes/Enclosures  
Flow Control & Diaphragm  
Solenoid/Wiring Connections  
Manual and Automatic Operation

### GRASS

Sprinkler & Nozzle Size  
Coverage & Distribution  
Leaks & Function  
Precipitation Rates  
Overspray  
Leaks  
Water Waste  
Age & Condition

### PLANTS & TREES

Application Rate  
Leaks  
Emitter Size & Location  
Efficiency  
Coverage

info@LandTechNetwork.com



# IRRIGATION - STAGE 1

**IMPROVE** maintenance techniques by utilizing knowledge and experience to maximize aesthetics while minimizing your resources



Ensure there is proper programming and sprinkler coverage in grass areas.



# IRRIGATION - STAGE 2

**REDUCE** spending by analyzing and modifying the current landscape budget to best accommodate your individual goals and priorities



After inspecting every valve box, clock, back flow, wiring system, drip sections and grass areas, we highly recommend performing a complete detailed irrigation assessment when/if we start as your landscape manager.



# IRRIGATION - STAGE 2

**REDUCE** spending by analyzing and modifying the current landscape budget to best accommodate your individual goals and priorities



After inspecting every valve box, clock, back flow, wiring system, drip sections and grass areas, we highly recommend performing a complete detailed irrigation assessment when/if we start as your landscape manager.



# IRRIGATION - STAGE 2

**REDUCE** spending by analyzing and modifying the current landscape budget to best accommodate your individual goals and priorities



After inspecting every valve box, clock, back flow, wiring system, drip sections and grass areas, we highly recommend performing a complete detailed irrigation assessment when/if we start as your landscape manager.



# IRRIGATION - STAGE 2

**REDUCE** spending by analyzing and modifying the current landscape budget to best accommodate your individual goals and priorities



After inspecting every valve box, clock, back flow, wiring system, drip sections and grass areas, we highly recommend performing a complete detailed irrigation assessment when/if we start as your landscape manager.



# GREEN GRASS

Grass is one of the most important parts of any landscape. Our intense grass management program will produce results.



## ALL INCLUSIVE PROGRAM

Grass requires proper irrigation, soil, nutrients and sunlight to grow healthy and green. We've built a program to include all of these.

- Soil Tests
- Nitrogen
- Phosphorous
- Potassium
- Soil Amendments
- Wetting Agents
- Iron
- Acid/PH/Salt Treatments
- Weed Control
- Insecticide
- Fungicide
- Aeration
- De-thatching
- Scalping
- Over-seeding
- Set Mow Heights





# GRASS - STAGE 1

**IMPROVE** maintenance techniques by utilizing knowledge and experience to maximize aesthetics while minimizing your resources



Perform turf care program with proper mowing techniques, seasonal nutrient applications, aeration and dethatching, proper and weed control programs



# GRASS - STAGE 1

**IMPROVE** maintenance techniques by utilizing knowledge and experience to maximize aesthetics while minimizing your resources



Perform turf care program with proper mowing techniques, seasonal nutrient applications, aeration and dethatching, proper and weed control programs



# P L A N T M A N A G E M E N T

An important part of managing your landscape assets is monitoring plant inventories. Over time, loss and maturity is to be expected. Understanding and budgeting for a reasonable amount of plant replacement is key to improving your property and staying up to date with modern plant palettes and design standards.



A landscape containing attractive plants increases property value and aesthetic appeal.



# PLANTS - STAGE 1

**IMPROVE** maintenance techniques by utilizing knowledge and experience to maximize aesthetics while minimizing your resources



Treat each species differently based on their specific needs at all times of the year. Performing the proper maintenance at the right time of year based on species showcases the intended variety and diversity of the landscape as a whole.



# P L A N T S - S T A G E 1

**IMPROVE** maintenance techniques by utilizing knowledge and experience to maximize aesthetics while minimizing your resources



Treat each species differently based on their specific needs at all times of the year. Performing the proper maintenance at the right time of year based on species showcases the intended variety and diversity of the landscape as a whole.



# PLANTS - STAGE 1

**IMPROVE** maintenance techniques by utilizing knowledge and experience to maximize aesthetics while minimizing your resources



Perform seasonal cutbacks to ensure a healthy growing season for plants. Seasonal cutbacks also increase the sustainability of the plants by reducing their water requirements and regulating the size of the plant for the space they are in.



# PLANTS - STAGE 1

**IMPROVE** maintenance techniques by utilizing knowledge and experience to maximize aesthetics while minimizing your resources



Perform natural pruning to promote flowers and keep the plants looking natural, yet contained and cared for. Over trimming stresses plants and results in dense, woody interiors, and ultimately reduces the lifespan of the plant.



# PLANTS - STAGE 1

**IMPROVE** maintenance techniques by utilizing knowledge and experience to maximize aesthetics while minimizing your resources



Perform natural pruning to promote flowers and keep the plants looking natural, yet contained and cared for. Over trimming stresses plants and results in dense, woody interiors, and ultimately reduces the lifespan of the plant.



# PLANTS - STAGE 1

**IMPROVE** maintenance techniques by utilizing knowledge and experience to maximize aesthetics while minimizing your resources



Selectively remove plants to highlight various species throughout landscape area.  
Trim plants and trees to create separation and diversity. Gradually blend manicured landscape in to natural desert area.



# PLANTS - STAGE 1

**IMPROVE** maintenance techniques by utilizing knowledge and experience to maximize aesthetics while minimizing your resources



Selectively remove plants to highlight various species throughout landscape area.  
Trim plants and trees to create separation and diversity. Gradually blend manicured landscape in to natural desert area.



# P L A N T S - S T A G E 2

**REDUCE** spending by analyzing and modifying the current landscape budget to best accommodate your individual goals and priorities



Removal and replacement of select plants and species that are unsightly or have outgrown their space / lifespan.  
Create a sustainable plant pallet to avoid future loss and improve aesthetics.



# PLANTS - STAGE 2

**REDUCE** spending by analyzing and modifying the current landscape budget to best accommodate your individual goals and priorities



Removal and replacement of select plants and species that are unsightly or have outgrown their space / lifespan.  
Create a sustainable plant pallet to avoid future loss and improve aesthetics.



# PLANTS - STAGE 2

**REDUCE** spending by analyzing and modifying the current landscape budget to best accommodate your individual goals and priorities



Removal and replacement of select plants and species that are unsightly or have outgrown their space / lifespan.  
Create a sustainable plant pallet to avoid future loss and improve aesthetics.



# PLANTS - STAGE 2

**REDUCE** spending by analyzing and modifying the current landscape budget to best accommodate your individual goals and priorities



Removal and replacement of select plants and species that are unsightly or have outgrown their space / lifespan.  
Create a sustainable plant pallet to avoid future loss and improve aesthetics.



# P L A N T S - S T A G E 3

**PLAN** and invest for your future by completing improvement projects that will increase your property value



Build plant replacement plan for bare areas where plants have been lost or removed.



# P L A N T S - S T A G E 3

**PLAN** and invest for your future by completing improvement projects that will increase your property value



Build plant replacement plan for bare areas where plants have been lost or removed.



# P L A N T S - S T A G E 3

**PLAN** and invest for your future by completing improvement projects that will increase your property value



Build plant replacement plan for bare areas where plants have been lost or removed.



# P L A N T S - S T A G E 3

**PLAN** and invest for your future by completing improvement projects that will increase your property value



Build plant replacement plan for bare areas where plants have been lost or removed.



# P L A N T S - S T A G E 3

**PLAN** and invest for your future by completing improvement projects that will increase your property value



Build plant replacement plan for bare areas where plants have been lost or removed.



# P L A N T S - S T A G E 3

**PLAN** and invest for your future by completing improvement projects that will increase your property value



Build plant replacement plan for bare areas where plants have been lost or removed.



# P L A N T S - S T A G E 3

**PLAN** and invest for your future by completing improvement projects that will increase your property value



Build plant replacement plan for corners and entrances to create consistency and improve aesthetics



# PLANTS - STAGE 3

**PLAN** and invest for your future by completing improvement projects that will increase your property value



Build plant replacement plan for corners and entrances to create consistency and improve aesthetics



# PLANTS - STAGE 3

**PLAN** and invest for your future by completing improvement projects that will increase your property value

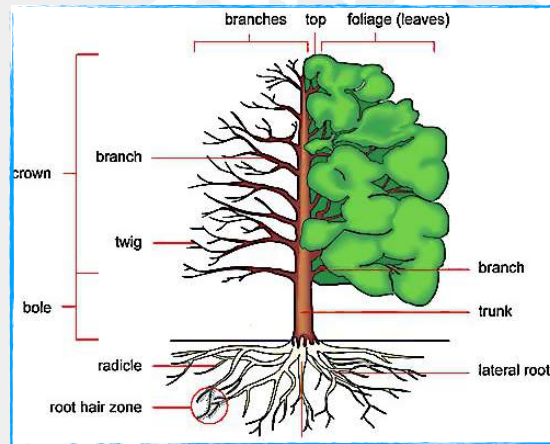


Upgrade monuments and signage to improve aesthetics and curb appeal.



# T R E E M A N A G E M E N T

We create a personalized tree management program designed for each property's individual needs. Outside of the included tree trimming plan, we proactively inspect your trees and propose any additional services necessary (removals, replacements, installs, etc.) to keep your trees healthy and your property looking it's best!



## A L L I N C L U S I V E P R O G R A M

We focus on the safety and longevity of your assets through proper pruning, nutrition, and preventative treatments.

- Remove diseased, dead, and damaged branches
- Perform thinning, reduce size, weight, liability
- Improve stability, structure and sustainability
- Aesthetic appeal, ground clearance, visibility
- Sustain natural shape and landscape design
- Allow light to filter through to interior branches
- Avoid breakage/unforeseen emergency corrections
- Competing limbs, crossed or rubbing branches

T R E E I N V E N T O R Y : Sample Property

TREE ID	SPECIES	SIZE	TRIMMING DETAIL	FERTILIZATION
1001	Palo Brea	L	Seasonal trim, keep elevated above parking and walkways	Bi-annually
1002	Palo Brea	M	Seasonal trim, keep elevated above parking and walkways	Bi-annually
1003	Palo Brea	S	Seasonal trim, train structure	Bi-annually
1004	Palo Brea	S	Seasonal trim, train structure	Bi-annually
1005	Palo Brea	M	Seasonal Trim, keep clear for traffic	Bi-annually
1006	Sisso	L	Seasonal trim, maintain for building signage	Bi-annually
1007	Sisso	L	Seasonal trim, maintain for building signage	Bi-annually
1008	Sisso	L	Seasonal trim, maintain for building signage	Bi-annually
1009	Sisso	L	Seasonal trim, maintain for building signage	Bi-annually
1010	Mesquite	M	Seasonal trim	Bi-annually
1011	Mesquite	L	Seasonal trim	Bi-annually
1012	Mesquite	L	Seasonal trim	Bi-annually
1013	Mesquite	L	Seasonal trim	Bi-annually
1014	Pine	M	Light trimming, watch for stress	Annually
1015	Pine	M	Light trimming, watch for stress	Annually
1016	Pine	M	Light trimming, watch for stress	Annually

L A N D T E C H

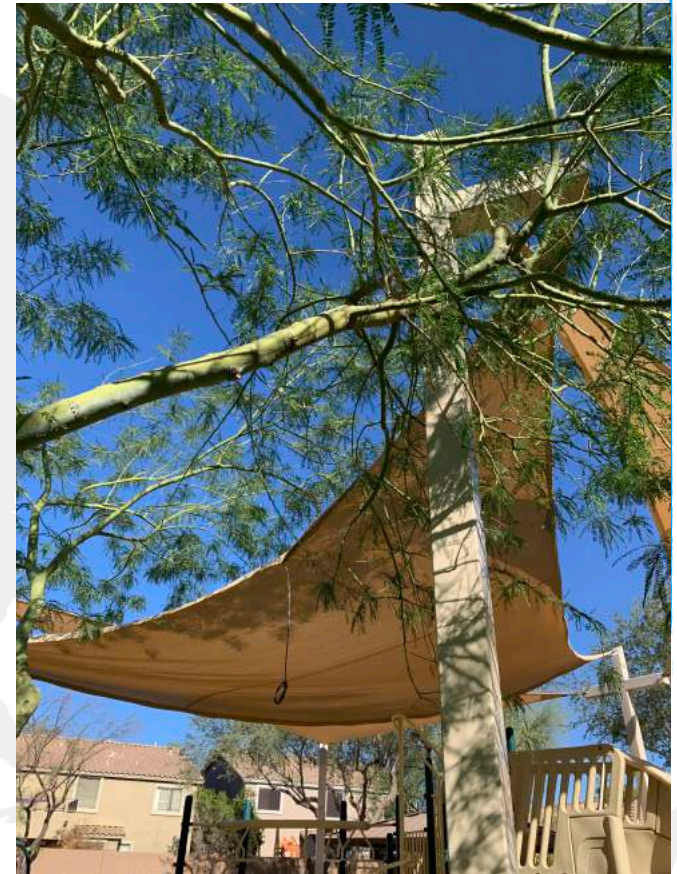
480-249-3555

info@LandTechNetwork.com



# T R E E S - S T A G E 1

**IMPROVE** maintenance techniques by utilizing knowledge and experience to maximize aesthetics while minimizing your resources



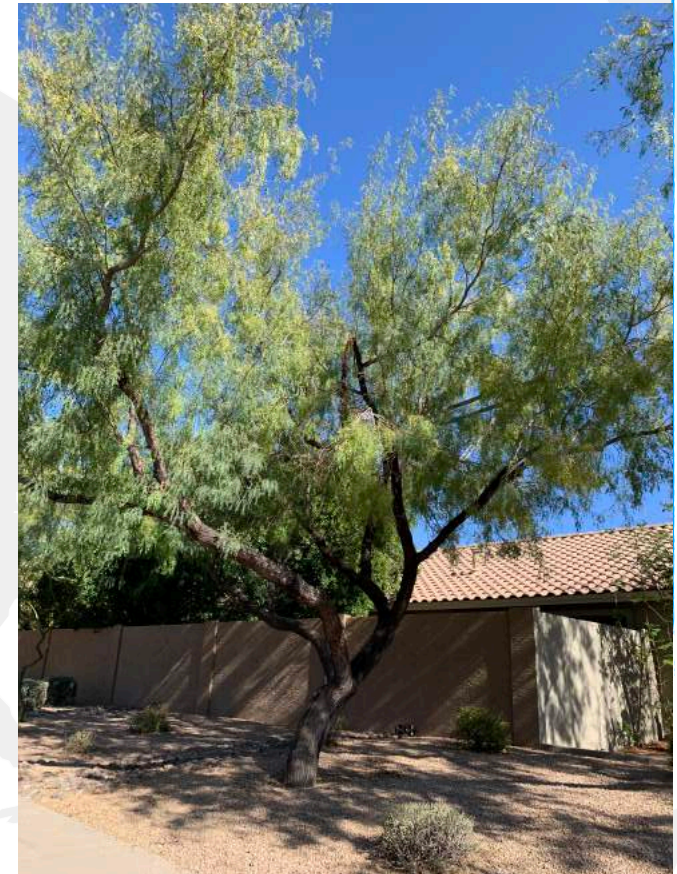
Perform regular all-inclusive tree trimming:

Remove diseased, dead, and damaged branches | Thinning, reduce size, weight, liability  
Improve stability, structure and sustainability | Aesthetic appeal, ground clearance, visibility



# T R E E S - S T A G E 1

**IMPROVE** maintenance techniques by utilizing knowledge and experience to maximize aesthetics while minimizing your resources



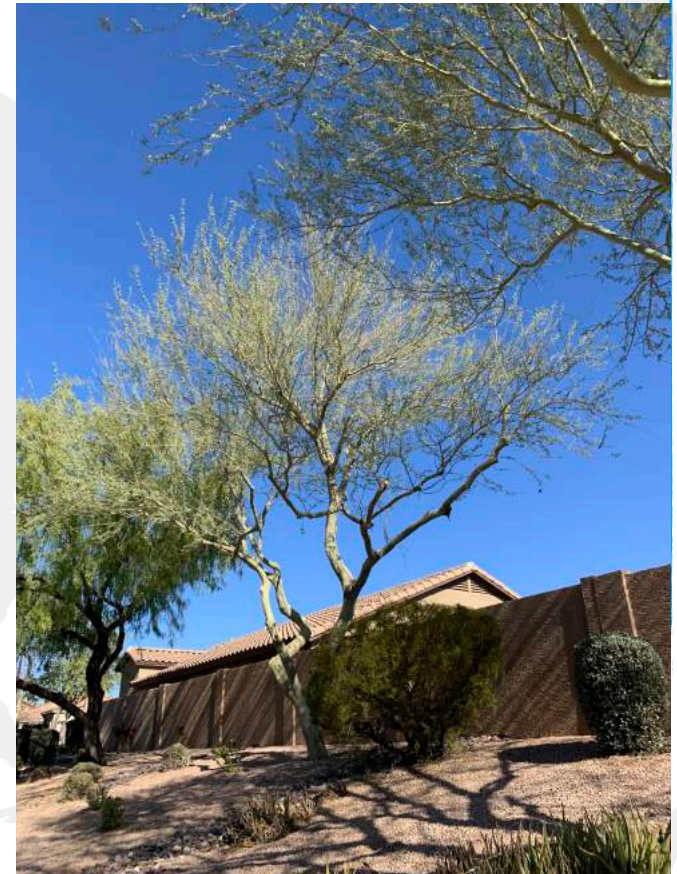
Perform regular all-inclusive tree trimming:

Remove diseased, dead, and damaged branches | Thinning, reduce size, weight, liability  
Improve stability, structure and sustainability | Aesthetic appeal, ground clearance, visibility



# T R E E S - S T A G E 1

**IMPROVE** maintenance techniques by utilizing knowledge and experience to maximize aesthetics while minimizing your resources



Perform regular all-inclusive tree trimming:

Remove diseased, dead, and damaged branches | Thinning, reduce size, weight, liability  
Improve stability, structure and sustainability | Aesthetic appeal, ground clearance, visibility



# T R E E S - S T A G E 1

**IMPROVE** maintenance techniques by utilizing knowledge and experience to maximize aesthetics while minimizing your resources



Perform regular all-inclusive tree trimming:

Remove diseased, dead, and damaged branches | Thinning, reduce size, weight, liability  
Improve stability, structure and sustainability | Aesthetic appeal, ground clearance, visibility



# T R E E S - S T A G E 1

IMPROVE maintenance techniques by utilizing knowledge and experience to maximize aesthetics while minimizing your resources



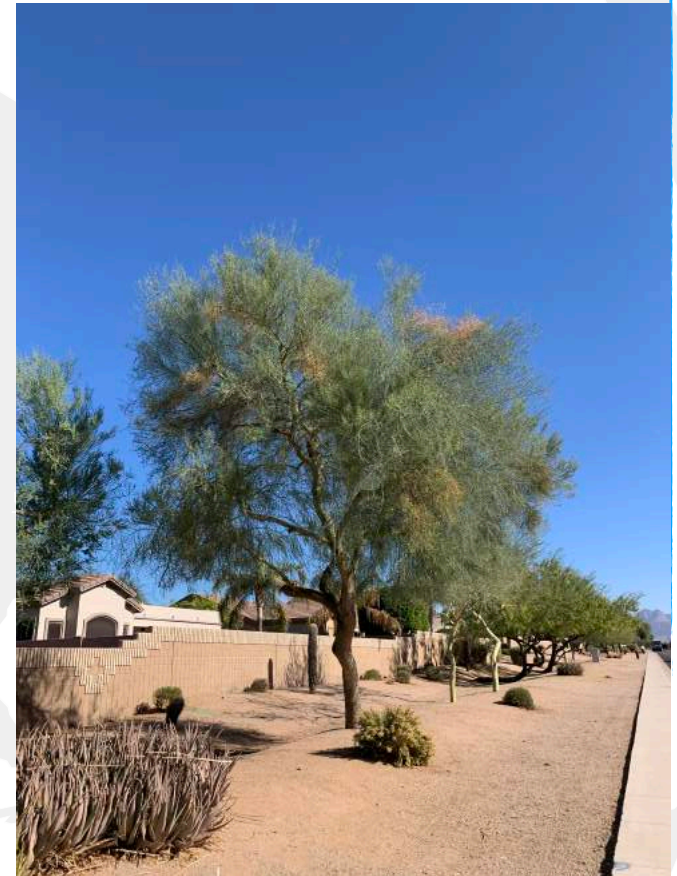
Perform regular all-inclusive tree trimming:

Remove diseased, dead, and damaged branches | Thinning, reduce size, weight, liability  
Improve stability, structure and sustainability | Aesthetic appeal, ground clearance, visibility



# T R E E S - S T A G E 1

**IMPROVE** maintenance techniques by utilizing knowledge and experience to maximize aesthetics while minimizing your resources



Perform regular all-inclusive tree trimming:

Remove diseased, dead, and damaged branches | Thinning, reduce size, weight, liability  
Improve stability, structure and sustainability | Aesthetic appeal, ground clearance, visibility



# T R E E S - S T A G E 1

**IMPROVE** maintenance techniques by utilizing knowledge and experience to maximize aesthetics while minimizing your resources



Perform regular all-inclusive tree trimming:

Remove diseased, dead, and damaged branches | Thinning, reduce size, weight, liability  
Improve stability, structure and sustainability | Aesthetic appeal, ground clearance, visibility



# T R E E S - S T A G E 1

IMPROVE maintenance techniques by utilizing knowledge and experience to maximize aesthetics while minimizing your resources



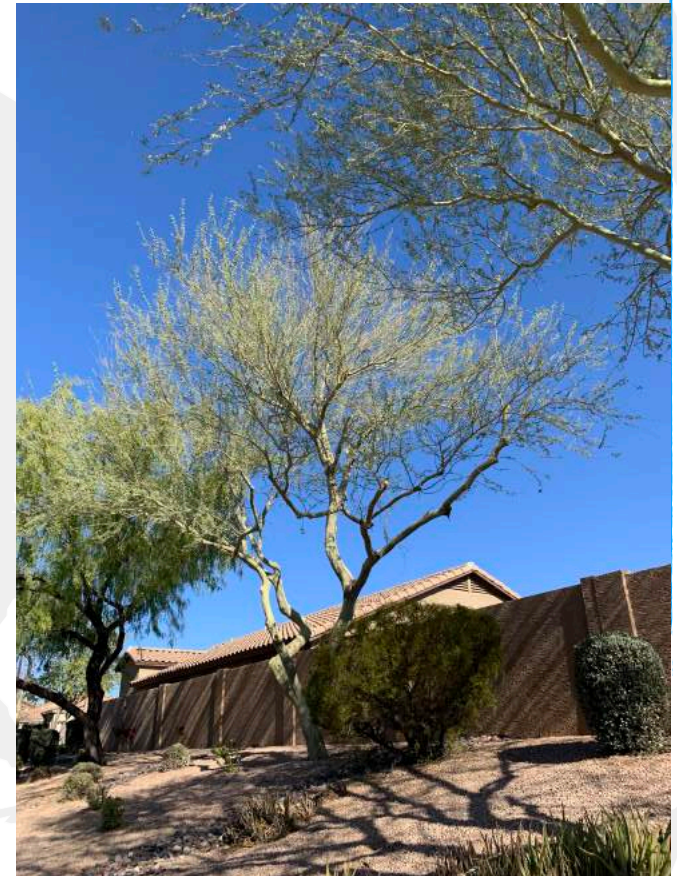
Perform regular all-inclusive tree trimming:

Remove diseased, dead, and damaged branches | Thinning, reduce size, weight, liability  
Improve stability, structure and sustainability | Aesthetic appeal, ground clearance, visibility



# T R E E S - S T A G E 1

IMPROVE maintenance techniques by utilizing knowledge and experience to maximize aesthetics while minimizing your resources

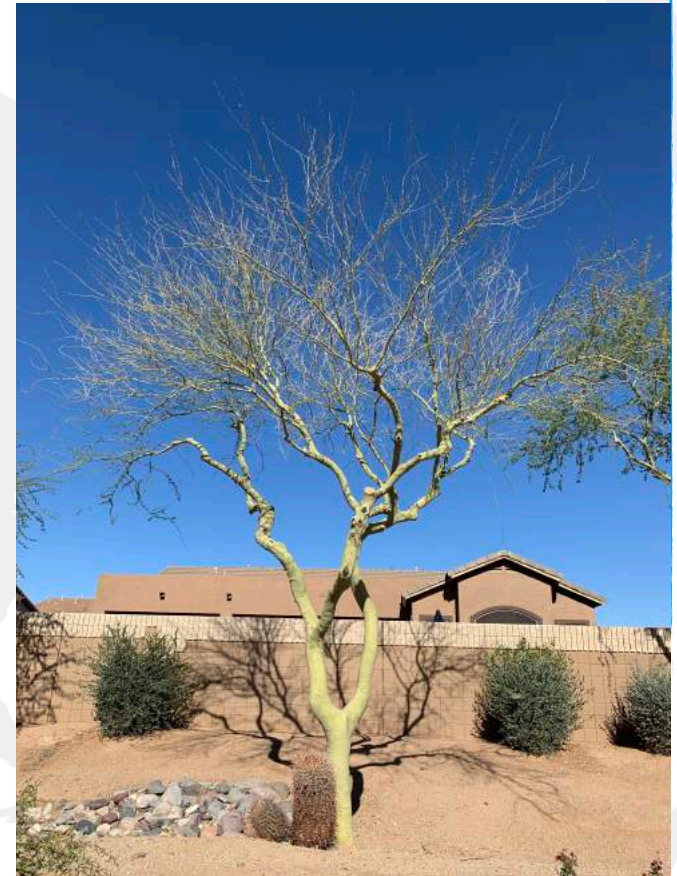


Perform LESS tree trimming to select species



# T R E E S - S T A G E 1

**IMPROVE** maintenance techniques by utilizing knowledge and experience to maximize aesthetics while minimizing your resources



Perform LESS tree trimming to select species



# T R E E S - S T A G E 1

IMPROVE maintenance techniques by utilizing knowledge and experience to maximize aesthetics while minimizing your resources

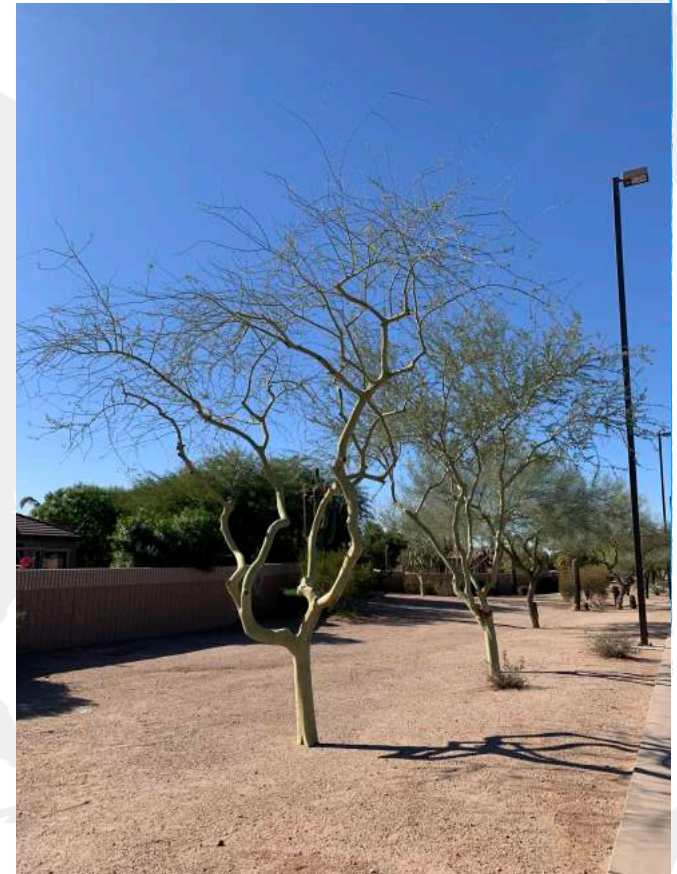


Perform LESS tree trimming to select species



# T R E E S - S T A G E 1

IMPROVE maintenance techniques by utilizing knowledge and experience to maximize aesthetics while minimizing your resources



Perform LESS tree trimming to select species



# T R E E S - S T A G E 1

IMPROVE maintenance techniques by utilizing knowledge and experience to maximize aesthetics while minimizing your resources



Prune off Mistletoe disease and/or unsightly branches and/or trees to improve safety, clearance, visibility, and aesthetic appeal.



# T R E E S - S T A G E 2

**REDUCE** spending by analyzing and modifying the current landscape budget to best accommodate your individual goals and priorities

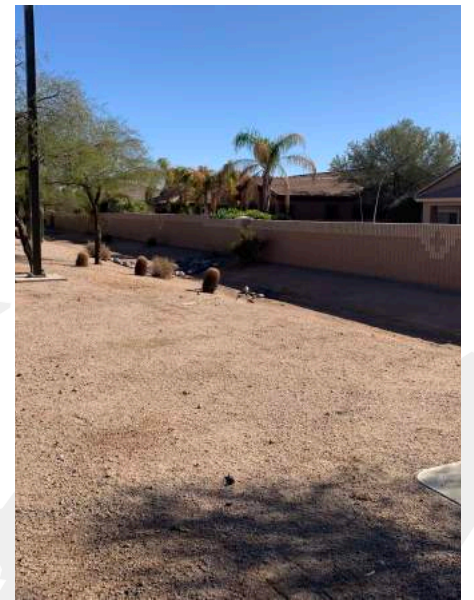
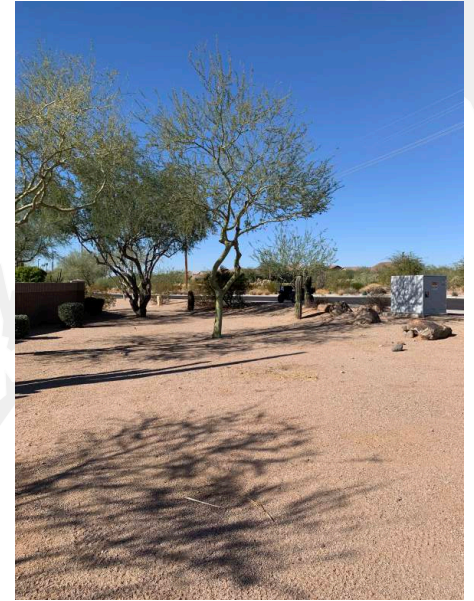


Remove dangerous and unsightly branches and/or trees to improve safety, clearance, visibility, and aesthetic appeal.



# T R E E S - S T A G E 3

**PLAN** and invest for your future by completing improvement projects that will increase your property value



Build tree replacement plans to improve aesthetics in areas where trees have been lost or removed.



# T R E E S - S T A G E 3

**PLAN** and invest for your future by completing improvement projects that will increase your property value

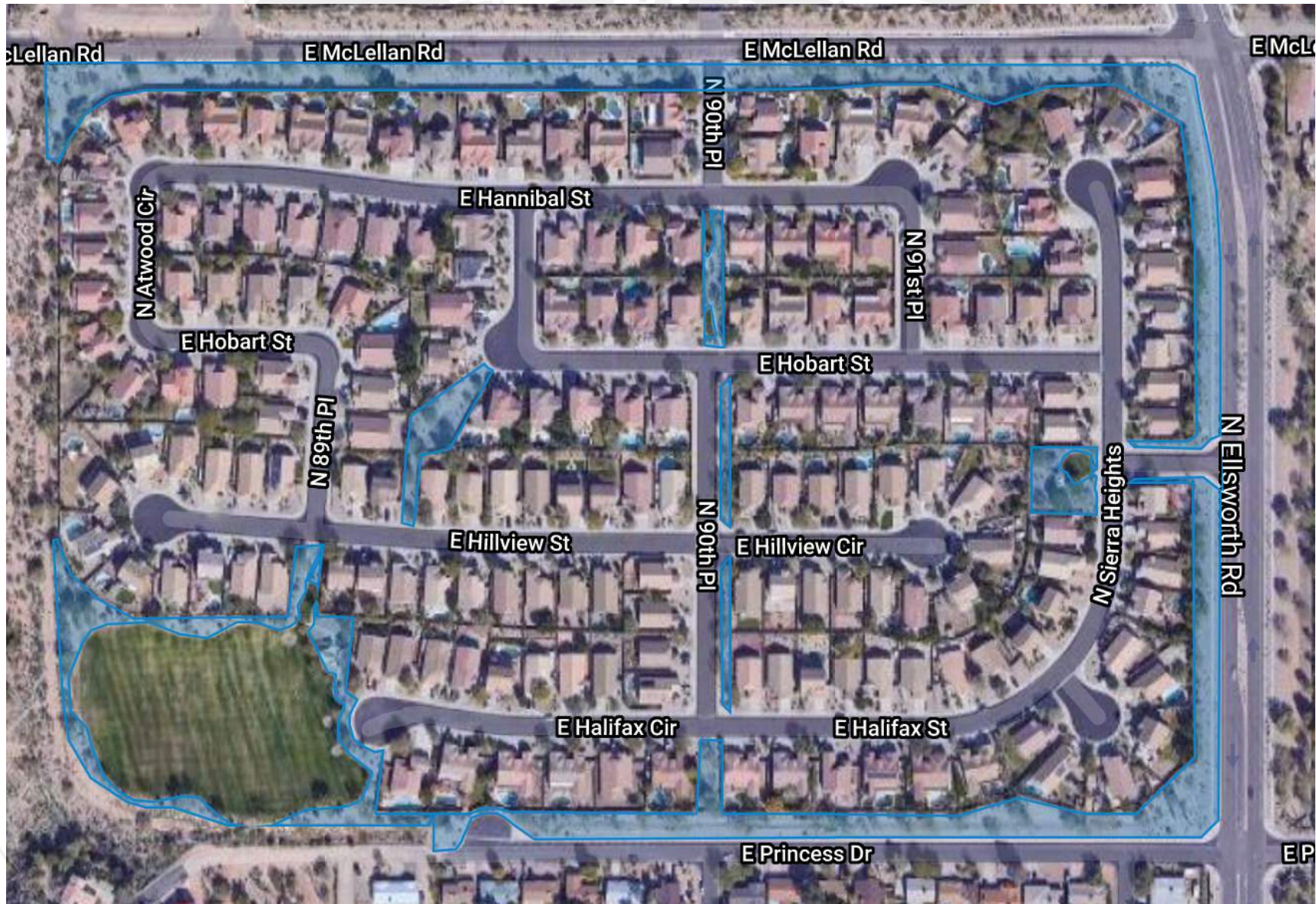


Build replacement tree plans to improve aesthetics in areas where trees have been lost or removed.



# ROCK RECOMMENDATIONS

Rock and mulch is an asset that slowly diminishes over time. If not planned for, this can be an unexpected large expense. Plan to phase rock replenishment on a scheduled basis, before it becomes an urgent issue.





# ROCK - STAGE 1

**IMPROVE** maintenance techniques by utilizing knowledge and experience to maximize aesthetics while minimizing your resources



Maintain granite areas to a fresh and neat appearance with proper blowing and raking techniques, and chemical weed control programs.



# ROCK - STAGE 2

**REDUCE** spending by analyzing and modifying the current landscape budget to best accommodate your individual goals and priorities



Build plans to repair and reveal curbing throughout the property.



# ROCK - STAGE 3

**PLAN** and invest for your future by completing improvement projects that will increase your property value

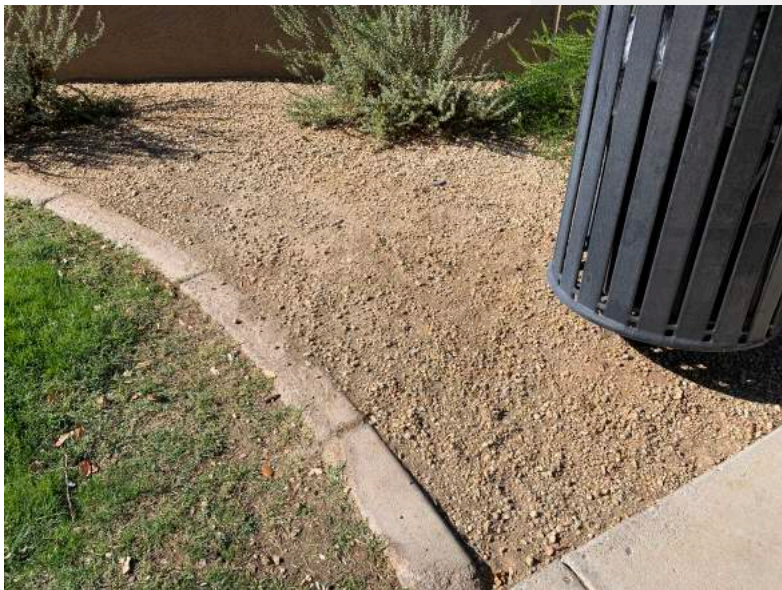


Build plans to replenish areas where the rock is sparse to improve uniformity and aesthetics and control drainage.



# ROCK - STAGE 3

PLAN and invest for your future by completing improvement projects that will increase your property value



Build plans to replenish areas where the rock is sparse to improve uniformity and aesthetics and control drainage.



# ROCK - STAGE 3

PLAN and invest for your future by completing improvement projects that will increase your property value



Build plans to replenish areas where the rock is sparse to improve uniformity and aesthetics and control drainage.



# ROCK - STAGE 3

PLAN and invest for your future by completing improvement projects that will increase your property value



Build plans to replenish areas where the rock is sparse to improve uniformity and aesthetics and control drainage.



# ROCK - STAGE 3

**PLAN** and invest for your future by completing improvement projects that will increase your property value



Build annual service plans to clean out, repair and maintain erosion control





T H A N K Y O U

We greatly appreciate the opportunity to provide you with our recommendations to manage and improve the landscape at your property.

-Your LandTech Team